

537C Series RF Driver



0419

The 537C is an analog modulation driver designed to operate with Isomet 350MHz AO modulators for high speed control of laser beam intensity.

The driver design is based on a SAW resonator, a wideband mixer, and a RF Power amplifier. Under control of the video input signal, the mixer impresses the modulating video on the carrier amplitude. The resulting double sideband AM signal is subsequently amplified by the Class A MOSFET amplifier.

Efficient heat transfer from the driver requires that the mounting base be attached to an external heat sink not exceeding 60°C in temperature. The driver is internally regulated and thus accepts a wide DC power input range.

SPECIFICATIONS

Output impedance:	50Ω Nominal
Load Mismatch VSWR:	2:1 Max
RF On-Off Ratio:	>40dB
Analogue Input:	0 - 1V for 100% depth of modulation 50 ohm input impedance
Frequency Accuracy:	± 25ppm
Frequency Stability:	± 25ppm
DC Power Input:	+22 to +30Vdc regulated to ± 1% 400mA
Temperature Range:	0°C to 60°C ambient, temperature at mounting face must not exceed 60°C.
Mounting Orientation:	Any
Dimensions:	See Outline, reverse side.

PERFORMANCE

<u>Centre Frequency</u>	<u>Minimum Rise Time</u>	<u>RF Drive Power</u>
350MHz	5nsec	>1.5 W

ALL SPECIFICATIONS SUBJECT TO CHANGE WITHOUT NOTICE

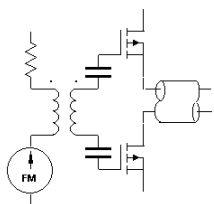
ISOMET CORP, 10342 Battlevue Parkway, Manassas, VA 20109, USA.

Tel: (703) 321 8301 Fax: (703) 321 8546

E-mail: ISOMET@ISOMET.COM Web Page: WWW.ISOMET.COM

Quality Assured.

In-house: RF & Digital design
Software Development
OEM manufacture

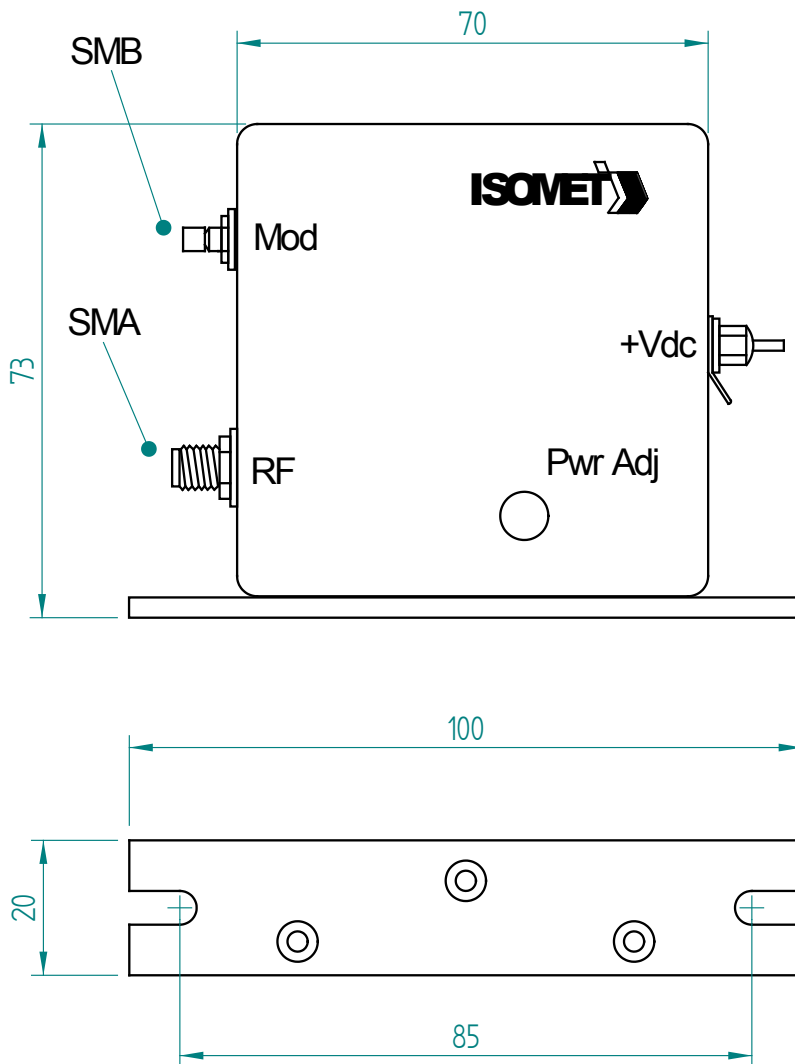


537C Series RF Driver



0419

OUTLINE DRAWING



Dimensions: mm
Connector Type: As indicated
Power Adjustment: 10 turn potentiometer

ALL SPECIFICATIONS SUBJECT TO CHANGE WITHOUT NOTICE
ISOMET CORP, 10342 Battleview Parkway, Manassas, VA 20109, USA.
Tel: (703) 321 8301 Fax: (703) 321 8546
E-mail: ISOMET@ISOMET.COM Web Page: WWW.ISOMET.COM

Quality Assured.
In-house: RF & Digital design
Software Development
OEM manufacture